

Staffordshire Bull Terrier

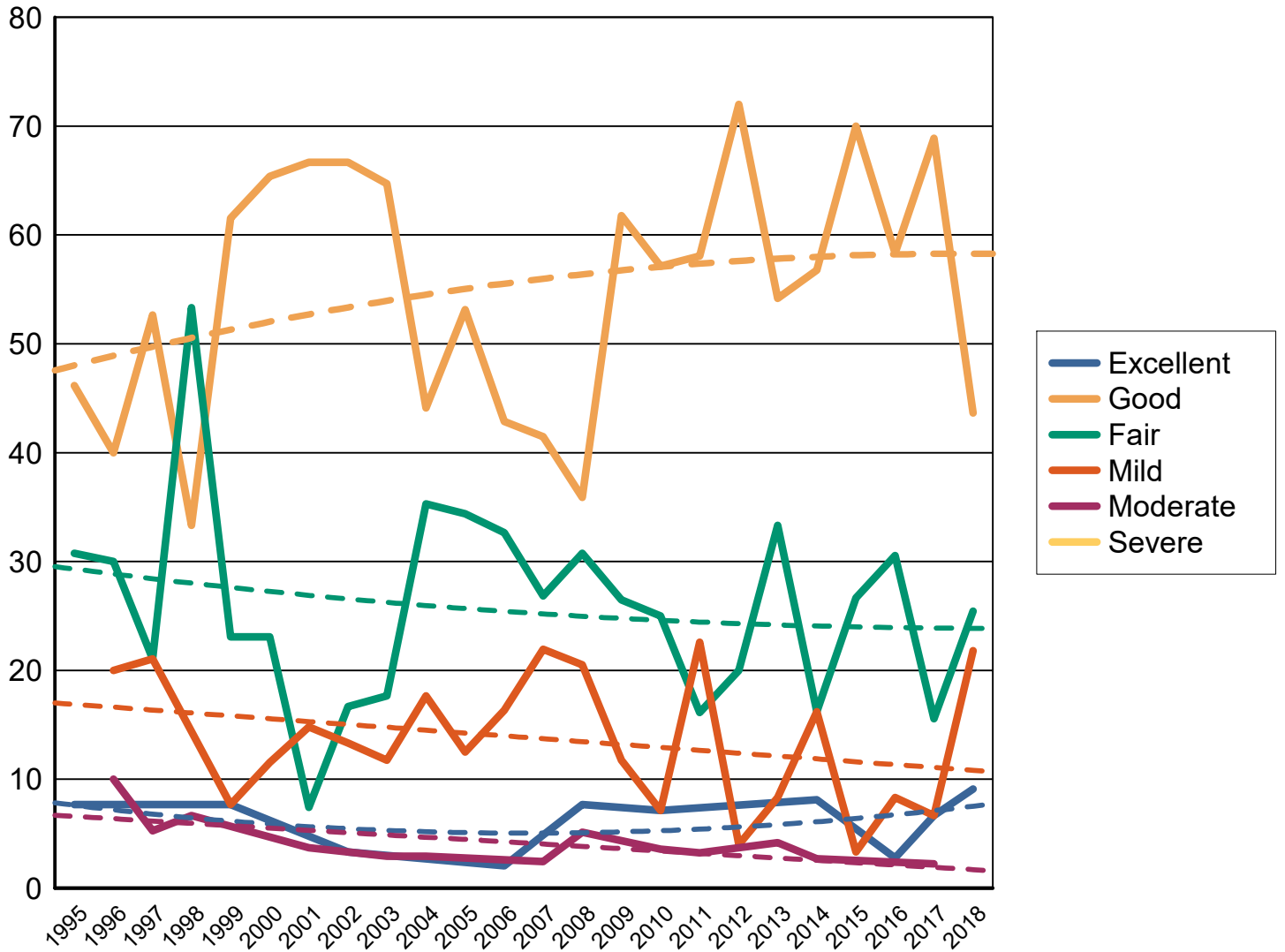
All data as of 12-31-2018

Dysplastic rank, all breeds with more than 100 cases

		<i>Normals</i>		<i>Equivocal or Carrier</i>		<i>Abnormal</i>	
Hips	57 of 181	661	82.32%	13	1.62%	129	16.06% CHIC required
Elbow	15 of 121	285	81.43%	1	0.29%	64	18.29%
Cardiac		207	99.52%	1	0.48%	0	
Thyroid		24	85.71%	4	14.29%	0	
Legg-Calve-Perthes		7	100.00%	0		0	
OFA EYE Registry		209	99.05%	0		2	0.95% CHIC required
L 2 Hydroxyglutaric Acidurea		112	100.00%	0		0	
Cone Rod Dystrophy 2		1	100.00%	0		0	
Shoulder		11	100.00%	0		0	
Cataracts		113	99.12%	1	0.88%	0	
Hyperuricosuria		2	100.00%	0		0	
Baer Hearing Test		21	100.00%	0		0	
Patella		167	99.40%	0		1	0.60%
Degenerative Myelopathy		50	87.72%	2	3.51%	5	8.77%
Cone Rod Dystrophy		1	100.00%	0		0	
Advanced Cardiac		31	100.00%	0		0	
Dentition Database		9	81.82%	0		2	18.18%

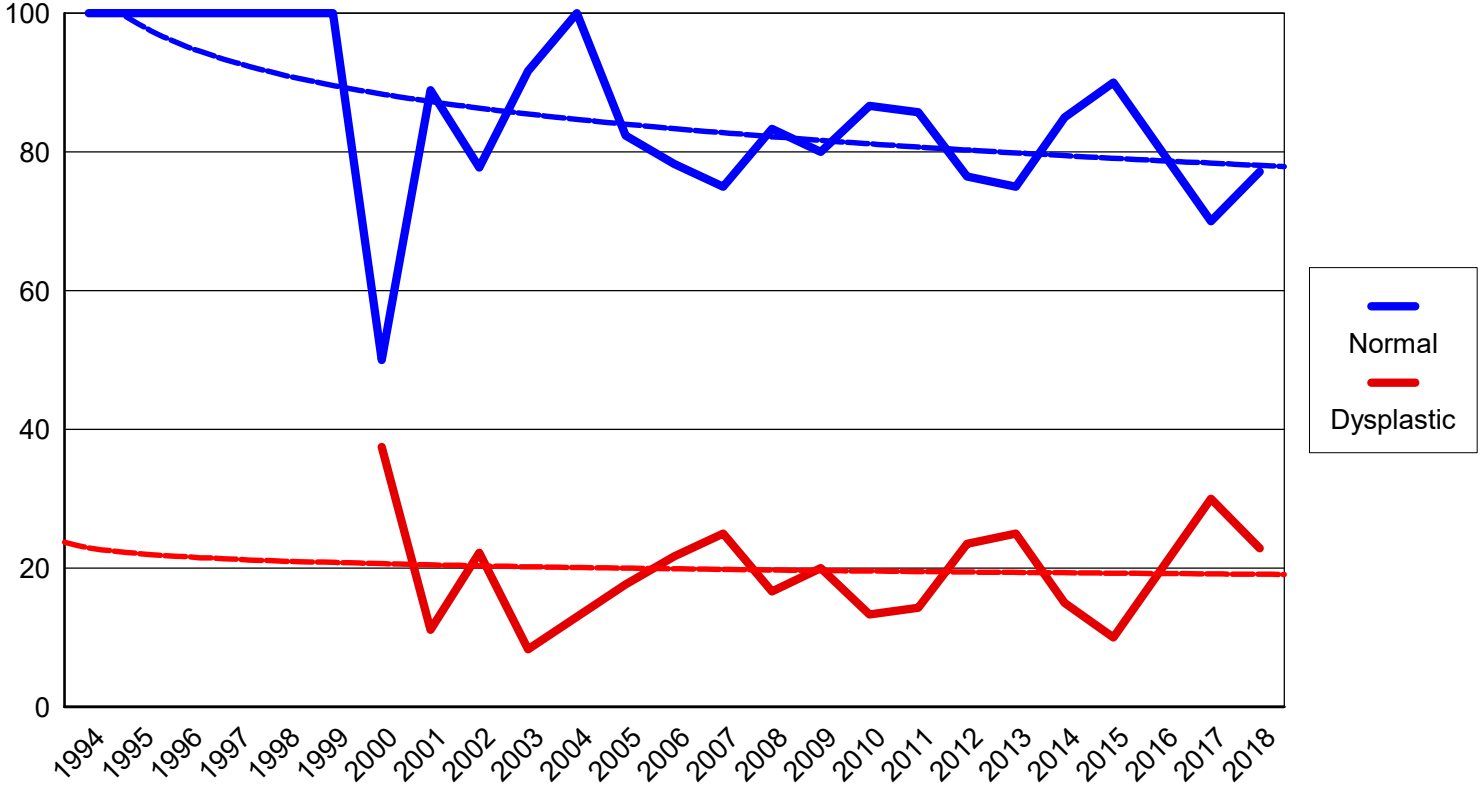
STAFFORDSHIRE BULL TERRIER

Hip percentages by rating with trendlines



STAFFORDSHIRE BULL TERRIER

Elbow percentages by rating with trendlines



Percent submitted to the open registry

Hips

Report year	Cases	Excellent %	Good %	Fair %	Borderline %	Mild %	Moderate %	Severe %
1977			1 50.00%			1 50.00%		
1980			2 100.00%					
1984			2 40.00%	2 40.00%		1 20.00%		
1985			1 50.00%	1 50.00%				
1988			3 75.00%			1 25.00%		
1989			5 22.73%	10 45.45%		5 22.73%	2 9.09%	
1990			3 50.00%	1 16.67%	1 16.67%	1 16.67%		
1991			2 33.33%	2 33.33%	1 16.67%	1 16.67%		
1992			4 44.44%	4 44.44%		1 11.11%		
1993			4 44.44%	1 11.11%		2 22.22%	1 11.11%	
1994			2 33.33%	4 66.67%				
1995		1 7.69%	6 46.15%	4 30.77%	2 15.38%			
1996			4 40.00%	3 30.00%		2 20.00%	1 10.00%	
1997			10 52.63%	4 21.05%		4 21.05%	1 5.26%	
1998			5 33.33%	8 53.33%	1 6.67%		1 6.67%	
1999		1 7.69%	8 61.54%	3 23.08%		1 7.69%		
2000			17 65.38%	6 23.08%		3 11.54%		
2001			18 66.67%	2 7.41%	2 7.41%	4 14.81%	1 3.70%	
2002		1 3.33%	20 66.67%	5 16.67%		4 13.33%		
2003			22 64.71%	6 17.65%	1 2.94%	4 11.76%	1 2.94%	
2004			15 44.12%	12 35.29%		6 17.65%	1 2.94%	
2005			17 53.13%	11 34.38%		4 12.50%		

Percent submitted to the open registry

Hips

Report year	Cases	Excellent %	Good %	Fair %	Borderline %	Mild %	Moderate %	Severe %
2006		1	21	16	3	8		
	18.37%	2.04%	42.86%	32.65%	6.12%	16.33%		
2007		2	17	11	1	9	1	
	9.76%	4.88%	41.46%	26.83%	2.44%	21.95%	2.44%	
2008		3	14	12		8	2	
	25.64%	7.69%	35.90%	30.77%		20.51%	5.13%	
2009			21	9		4		
	20.59%		61.76%	26.47%		11.76%		
2010		2	16	7		2	1	
		7.14%	57.14%	25.00%		7.14%	3.57%	
2011			18	5		7	1	
	16.13%		58.06%	16.13%		22.58%	3.23%	
2012			18	5	1	1		
	12.00%		72.00%	20.00%	4.00%	4.00%		
2013			13	8		2	1	
	12.50%		54.17%	33.33%		8.33%	4.17%	
2014		3	21	6		6	1	
	21.62%	8.11%	56.76%	16.22%		16.22%	2.70%	
2015			21	8		1		
	20.00%		70.00%	26.67%		3.33%		
2016		1	21	11		3		
	25.00%	2.78%	58.33%	30.56%		8.33%		
2017		3	31	7		3	1	
	22.22%	6.67%	68.89%	15.56%		6.67%	2.22%	
2018		5	24	14		12		
	25.45%	9.09%	43.64%	25.45%		21.82%		
Totals		23	430	208	13	111	18	
		2.86%	53.48%	25.87%	1.62%	13.81%	2.24%	

Elbow

<i>Report Year</i>	<i>Cases</i>	<i>Normal %</i>	<i>Grade 1 %</i>	<i>Grade 2 %</i>	<i>Grade 3 %</i>	<i>Borderline %</i>
1994	2	2 100.00%				
1995	1	1 100.00%				
1996	1	1 100.00%				
1997	2	2 100.00%				
1998	5	5 100.00%				
1999	5	5 100.00%				
2000	8	4 50.00%	2 25.00%	1 12.50%		1 12.50%
2001	9	8 88.89%		1 11.11%		
2002	9	7 77.78%	2 22.22%			
2003	12	11 91.67%	1 8.33%			
2004	11	11 100.00%				
2005	17	14 82.35%	2 11.76%	1 5.88%		
2006	23	18 78.26%	4 17.39%	1 4.35%		
2007	16	12 75.00%	4 25.00%			
2008	18	15 83.33%	3 16.67%			
2009	25	20 80.00%	4 16.00%	1 4.00%		
2010	15	13 86.67%	2 13.33%			
2011	21	18 85.71%	1 4.76%	2 9.52%		
2012	17	13 76.47%	3 17.65%	1 5.88%		
2013	8	6 75.00%	2 25.00%			
2014	20	17 85.00%	1 5.00%	2 10.00%		

Elbow

<i>Report Year</i>	<i>Cases</i>	<i>Normal</i> %	<i>Grade 1</i> %	<i>Grade 2</i> %	<i>Grade 3</i> %	<i>Borderline</i> %
2015	20	18 90.00%	2 10.00%			
2016	20	16 80.00%	4 20.00%			
2017	30	21 70.00%	6 20.00%	3 10.00%		
2018	35	27 77.14%	6 17.14%	2 5.71%		
Totals	350	285 81.43%	49 14.00%	15 4.29%		1 0.29%

Baer Hearing Test

<i>Report year</i>	<i>Cases</i>	<i>Normal</i>	<i>% Normal</i>	<i>Abnormal</i>	<i>% Abnormal</i>	<i>Equivocal</i>	<i>% Equivocal</i>
Staffordshire Bull Terrier							
2005	4	4	100.0				
2006	4	4	100.0				
2008	1	1	100.0				
2009	1	1	100.0				
2010	1	1	100.0				
2012	3	3	100.0				
2013	2	2	100.0				
2015	1	1	100.0				
2016	1	1	100.0				
2017	3	3	100.0				
Totals	21	21	100.0				

Cardiac

<i>Report year</i>	<i>Cases</i>	<i>Normal</i>	<i>% Normal</i>	<i>Abnormal</i>	<i>% Abnormal</i>	<i>Equivocal</i>	<i>% Equivocal</i>
Staffordshire Bull Terrier							
2002	1	1	100.0				
2003	6	5	83.3			1	16.7
2004	7	7	100.0				
2005	11	11	100.0				
2006	14	14	100.0				
2007	8	8	100.0				
2008	8	8	100.0				
2009	18	18	100.0				
2010	6	6	100.0				
2011	11	11	100.0				
2012	11	11	100.0				
2013	19	19	100.0				
2014	14	14	100.0				
2015	26	26	100.0				
2016	17	17	100.0				
2017	12	12	100.0				
2018	19	19	100.0				
Totals	208	207	99.5			1	0.5

Cataracts

<i>Report year</i>	<i>Cases</i>	<i>Normal</i>	<i>% Normal</i>	<i>Abnormal</i>	<i>% Abnormal</i>	<i>Carrier</i>	<i>% Carrier</i>
Staffordshire Bull Terrier							
2010	3	2	66.7			1	33.3
2011	2	2	100.0				
2013	9	9	100.0				
2014	19	19	100.0				
2015	12	12	100.0				
2016	16	16	100.0				
2017	22	22	100.0				
2018	31	31	100.0				
Totals	114	113	99.1			1	0.9

Cone Rod Dystrophy

<i>Report year</i>	<i>Cases</i>	<i>Normal</i>	<i>% Normal</i>	<i>Abnormal</i>	<i>% Abnormal</i>	<i>Carrier</i>	<i>% Carrier</i>
Staffordshire Bull Terrier							
2018	1	1	100.0				
Totals	1	1	100.0				

Degenerative Myelopathy

<i>Report year</i>	<i>Cases</i>	<i>Normal</i>	<i>% Normal</i>	<i>Abnormal</i>	<i>% Abnormal</i>	<i>Carrier</i>	<i>% Carrier</i>
Staffordshire Bull Terrier							
2008	1			1	100.0		
2010	1	1	100.0				
2011	1	1	100.0				
2012	3	1	33.3	1	33.3	1	33.3
2013	1	1	100.0				
2014	5	5	100.0				
2015	4	3	75.0	1	25.0		
2016	5	4	80.0	1	20.0		
2017	12	12	100.0				
2018	24	22	91.7	1	4.2	1	4.2
Totals	57	50	87.7	5	8.8	2	3.5

Dentition Database

<i>Report year</i>	<i>Cases</i>	<i>Normal</i>	<i>% Normal</i>	<i>Abnormal</i>	<i>% Abnormal</i>
Staffordshire Bull Terrier					
2012	2	2	100.0		
2013	2	2	100.0		
2015	1			1	100.0
2016	1			1	100.0
2017	2	2	100.0		
2018	3	3	100.0		
Totals	11	9	81.8	2	18.2

Eyes

<i>Report year</i>	<i>Cases</i>	<i>Normal</i>	<i>% Normal</i>	<i>Abnormal</i>	<i>% Abnormal</i>	<i>Breeder opt.</i>	<i>% Breeder opt.</i>
Staffordshire Bull Terrier							
2012	1	1	100.0				
2013	32	31	96.9			1	3.1
2014	26	22	84.6	1	3.9	3	11.5
2015	30	28	93.3			2	6.7
2016	29	28	96.6			1	3.5
2017	27	24	88.9			3	11.1
2018	57	55	96.5	1	1.8	1	1.8
Totals	202	189	93.6	2	1.0	11	5.5

Hyperuricosuria

<i>Report year</i>	<i>Cases</i>	<i>Normal</i>	<i>% Normal</i>	<i>Abnormal</i>	<i>% Abnormal</i>	<i>Carrier</i>	<i>% Carrier</i>
Staffordshire Bull Terrier							
2015	1	1	100.0				
2017	1	1	100.0				
Totals	2	2	100.0				

L 2 Hydroxyglutaric Acidurea

<i>Report year</i>	<i>Cases</i>	<i>Normal</i>	<i>% Normal</i>	<i>Abnormal</i>	<i>% Abnormal</i>	<i>Carrier</i>	<i>% Carrier</i>
Staffordshire Bull Terrier							
2008	3	3	100.0				
2010	1	1	100.0				
2011	2	2	100.0				
2013	6	6	100.0				
2014	20	20	100.0				
2015	12	12	100.0				
2016	16	16	100.0				
2017	21	21	100.0				
2018	31	31	100.0				
Totals	112	112	100.0				

Legg-Calve-Perthes

<i>Report year</i>	<i>Cases</i>	<i>Normal</i>	<i>% Normal</i>	<i>Abnormal</i>	<i>% Abnormal</i>	<i>Carrier</i>	<i>% Carrier</i>
Staffordshire Bull Terrier							
2011	7	7	100.0				
Totals	7	7	100.0				

Neuronal Ceroid Lipofuscinosis

<i>Report year</i>	<i>Cases</i>	<i>Normal</i>	<i>% Normal</i>	<i>Abnormal</i>	<i>% Abnormal</i>	<i>Carrier</i>	<i>% Carrier</i>
Staffordshire Bull Terrier							
2011	1					1	100.0
Totals	1					1	100.0

Patella

<i>Report year</i>	<i>Cases</i>	<i>Normal</i>	<i>% Normal</i>	<i>Abnormal</i>	<i>% Abnormal</i>	<i>Carrier</i>	<i>% Carrier</i>
Staffordshire Bull Terrier							
1994	2	2	100.0				
1995	1	1	100.0				
2000	1	1	100.0				
2001	4	4	100.0				
2002	1	1	100.0				
2003	1	1	100.0				
2004	5	5	100.0				

Patella

<i>Report year</i>	<i>Cases</i>	<i>Normal</i>	<i>% Normal</i>	<i>Abnormal</i>	<i>% Abnormal</i>
2005	3	3	100.0		
2006	3	3	100.0		
2007	3	3	100.0		
2008	7	7	100.0		
2009	9	9	100.0		
2010	5	5	100.0		
2011	12	12	100.0		
2012	15	15	100.0		
2013	15	15	100.0		
2014	16	16	100.0		
2015	9	9	100.0		
2016	13	13	100.0		
2017	21	20	95.2	1	4.8
2018	22	22	100.0		
Totals	168	167	99.4	1	0.6

Shoulder

<i>Report year</i>	<i>Cases</i>	<i>Normal</i>	<i>% Normal</i>	<i>Abnormal</i>	<i>% Abnormal</i>
Staffordshire Bull Terrier					
2009	5	5	100.0		
2011	2	2	100.0		
2013	1	1	100.0		
2015	1	1	100.0		
2017	2	2	100.0		
Totals	11	11	100.0		

Thyroid

<i>Report year</i>	<i>Cases</i>	<i>Normal</i>	<i>% Normal</i>	<i>Abnormal</i>	<i>% Abnormal</i>	<i>Equivocal</i>	<i>% Equivocal</i>
Staffordshire Bull Terrier							
2004	2	2	100.0				
2005	1	1	100.0				
2007	1	1	100.0				
2008	1	1	100.0				
2009	1	1	100.0				
2010	2	2	100.0				
2011	1	1	100.0				
2012	2	2	100.0				
2013	3	1	33.3			2	66.7
2014	4	3	75.0			1	25.0
2015	3	2	66.7			1	33.3
2017	4	4	100.0				
2018	3	3	100.0				
Totals	28	24	85.7			4	14.3